



# Priming Assisted Centrifugal Pump w/Autostart Model PAH4C60-4045H FT4 Size 6" x 4"



Total Head		Capacity of Pump in U.S. Gallons per Minute (GPM) at Continuous Performance			
P.S.I.	Feet				
164.7	380	350	350	350	N/A
156.0	360	620	820	820	N/A
138.7	320	660	940	1120	N/A
121.4	280	660	950	1190	950
104.0	240	660	950	1195	1200
86.7	200	660	950	1195	1350
69.4	160	660	950	1195	1410
52.0	120	660	950	1195	1420
34.7	80	660	950	1195	1420
<b>Suction Lift</b>		<b>25'</b>	<b>20'</b>	<b>15'</b>	<b>±10'</b>

‡Suction Lift Based On 2000 RPM Engine Speed.

**PUMP SPECIFICATIONS**

**Size:** 6" x 4" (152 mm x 102 mm) Flanged.

**Casing:** Ductile Iron 65-45-12.

**Maximum Operating Pressure** 244 psi (1682 kPa).\*

**Enclosed Type, Five Vane Impeller:** Ductile Iron 65-45-12.

Handles 1/2" (12,7 mm) Diameter Spherical Solids.

**Suction Head:** Ductile Iron 65-45-12.

**Suction Spool:** Gray Iron 30.

**Impeller Shaft:** Alloy Steel 4150M.

**Replaceable Wear Ring:** Ductile Iron 65-45-12.

**Pedestal:** Gray Iron 30.

**Seal Plate:** Gray Iron 30.

**Seal:** Mechanical, SAE 30 Non-Detergent Oil-Lubricated. Silicon Carbide Rotating Face and Stationary Seat. Fluorocarbon Elastomers (DuPont Viton® or Equivalent). Stainless Steel 316 Cage and Stainless Steel 18-8 Spring. Maximum Temperature of Liquid Pumped 160° F (71° C).\*

**Shaft Sleeve:** Stainless Steel 303/304.

**Priming Chamber:** Gray Iron 30 Housing w/Stainless Steel Float and Linkage.

**Discharge Check Valve:** Ductile Iron Housing with Welded Nickel Seat and Buna-N Flapper.

**Radial Bearing:** Open Single Row Ball.

**Thrust Bearing:** Open Double Row Ball.

**Bearing Cavity Lubrication:** Lithium EP2 Grease.

**Gaskets:** Vegetable Fiber.

**O-Rings:** Buna-N.

**Hardware:** Standard Plated Steel.

**Seal Cavity Oil Level Sight Gauges.**

\*Consult Factory for Applications Exceeding Maximum Pressure and/or Temperature Indicated.

**Standard Equipment:** Gear-Driven Air Compressor. Hoisting Bail. Combination Skid Base w/Fuel Tank. [Single Ball Type Float Switch](#). [Full Feature Control Panel](#)\*\*

**Optional Equipment:** Battery. Skid Base Kit. NPT Threaded Flange Kit. Heated Priming Chamber Kit. Suction Vacuum and Discharge Pressure Gauge Kit. Wheel Kit w/ DOT-Approved Lights and Electric Brakes. [Tandem Axle Over-the-Road Trailer](#) (Meets DOT Requirements) Available w/Either Electric or Hydraulic Surge Brakes, Running Lights, Jack Stands and Safety Chains/Cables. Liquid Level Transducer.

\*\*50 Ft. (15 m) Standard Length; Dual Switches and Alternate Cable Lengths Available From the Factory.



**WARNING!**  
Do not use in explosive atmosphere or for pumping volatile flammable liquids.

**ENGINE SPECIFICATIONS**

**Model:** John Deere 4045HFC06

**EPA Tier:** Final Tier 4.

**Type:** Four Cylinder, Turbocharged, Diesel Engine with Air Compressor.

**Displacement:** 276 Cu. In. (4,5 liters).

**Lubrication:** Forced Circulation.

**Air Cleaner:** Dry Type.

**Fuel Tank:** 120 U.S. Gals. (454 liters).

**Full Load Operating Time:** 15.0 Hrs.

**Starter:** 12V Electric.

**Standard Features:** Weather Cap. DOC/SCR Exhaust After Treatment System.

**Engine Control Features:** Padlockable Box with Throttle Control, Tachometer, Coolant Temperature, Oil Pressure, Voltage and Overstart Indicators/Shutdowns. Manual/Stop/Auto Key-switch. Audible Startup Warning Delay. Fuel Level Display/Alarm/Shutdown Electronic Fuel Level Sensor.

**JOHN DEERE PUBLISHED PERFORMANCE:**  
Maximum Gross BHP (Continuous)  
156 (116 kW) @ 2200 RPM



**GORMAN-RUPP PUMPS**

www.grpumps.com

Specifications Subject to Change Without Notice

Printed in U.S.A.

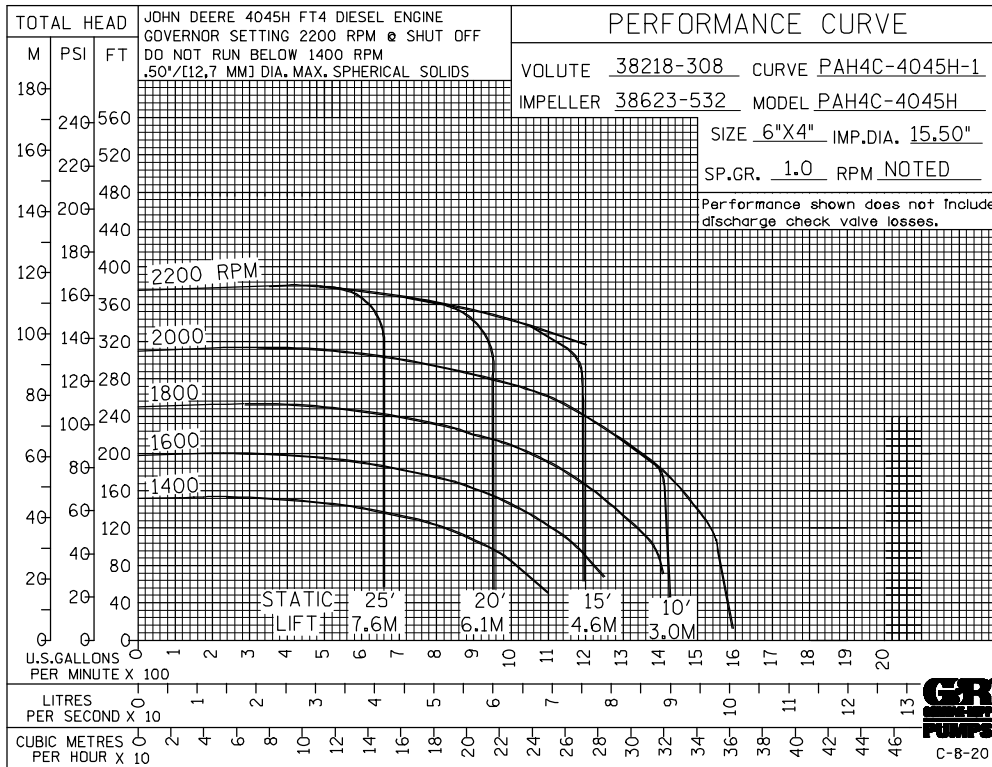
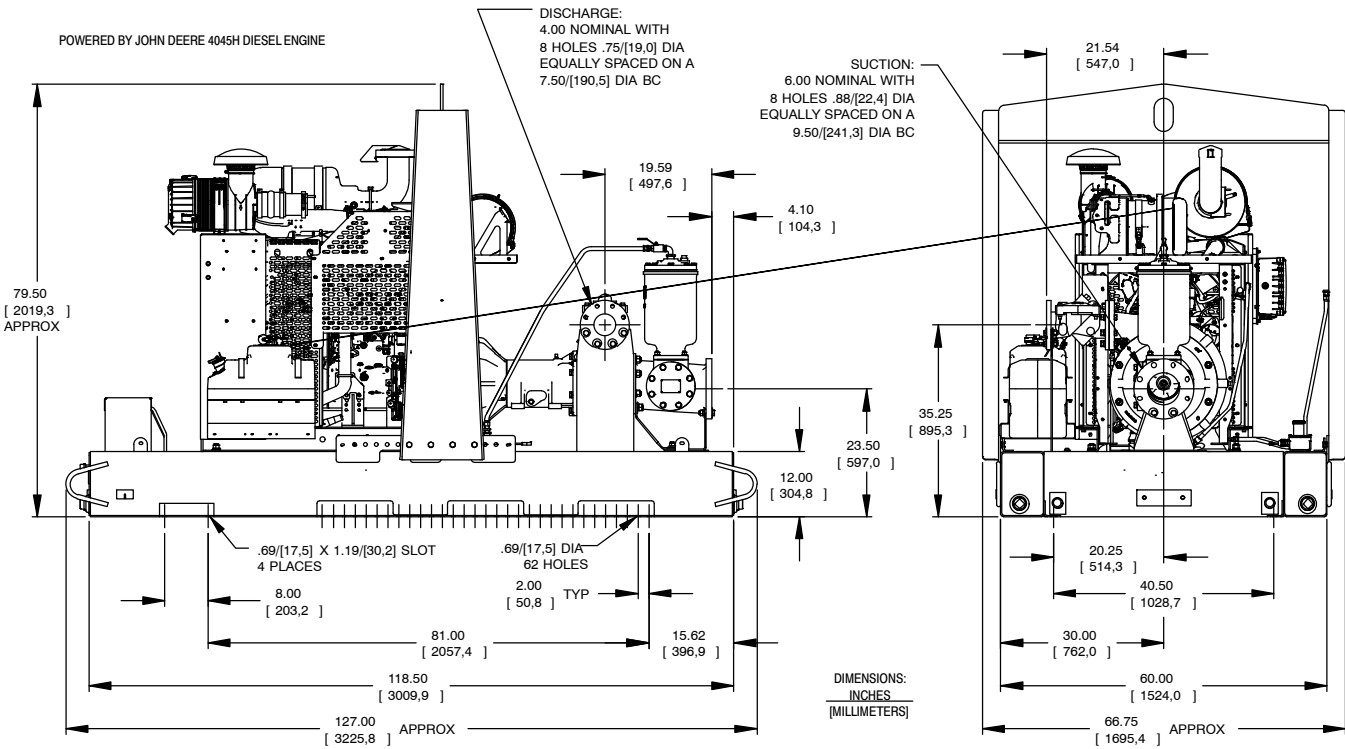
**Specification Data**

**SECTION 43, PAGE 261**

APPROXIMATE  
DIMENSIONS and WEIGHTS

**NET WEIGHT:**  
**SHIPPING WEIGHT:**  
**EXPORT CRATE SIZE:**

**4300 LBS. (1950,4 KG.)**  
**4425 LBS. (2007,1 KG.)**  
**449 CU. FT. (12,7 CU. M.)**



**GORMAN-RUPP PUMPS**

www.grpumps.com

Specifications Subject to Change Without Notice

Printed in U.S.A.